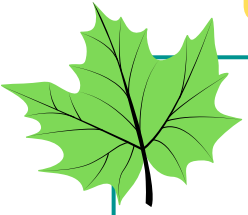




# Leaf Investigation Sheet



Do a leaf rubbing or trace the leaf in this box.

Draw/color the general shape of the tree the leaf came from.

Circle the answers below that best describe the leaf.

\_\_\_\_\_

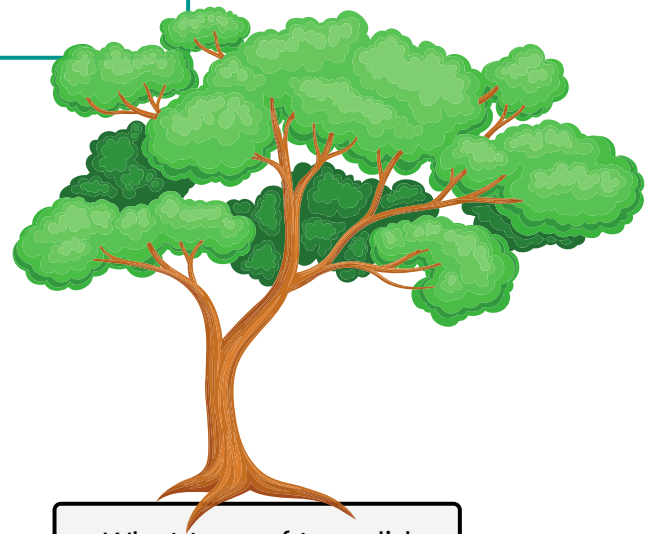
Is the leaf wide or skinny?

Does the leaf have jagged edges or smooth edges?

If you folded your leaf in half vertically, would it look the same on both sides? Yes or No.

Is the leaf smooth or rough to the touch?

Can you see the veins in the leaf if you hold it up to light? Yes or No.



What type of tree did the leaf come from?

After looking at the leaf guide, write the type of tree the leaf came from below.